

*We're better together*

*We're better together*

*We're better together*

**Agencourt<sup>®</sup> AMPure<sup>®</sup> XP**

***Xtra Performance Post-PCR clean UP***

*We're better together*

*We're better together*

*We're better together*

# Applications

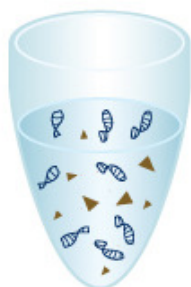
- o PCR
- o Genotyping, SNP detection
- o Fragment analysis
- o Sequencing (Sanger and Next generation)
- o Cloning
- o Primer walking

# Agencourt AMPure **XP**: **X**tra **P**erformance

- **Chemistry:** SPRI based with speed beads
- **Recovery:** Double stranded and single stranded DNA with 70 – 90% of fragment sizes 150bp – 10 kb
- **Processing time:** Faster than Traditional post PCR clean up methods
- **Purification:** Efficient removal of primers, primer dimers, dNTPs and salts.
- **Stable PCR products post clean up:** No PCR degradation at 4°C for 7 days
- **Compatible with down stream applications**
  - ✓ PCR
  - ✓ Genotyping ( SNP detection)
  - ✓ Fragment analysis
  - ✓ Sequencing (Sanger and Next generation (post shearing clean up)
  - ✓ Cloning
  - ✓ Fragment analysis
  - ✓ Primer walking
- **Automated and scalable:** 96, 384 well formats (Biomek® 3000, NX<sup>P</sup>, and FX<sup>P</sup>)
- **User friendly automated method**
  - o Quick start up menu
  - o Deck set up walk through menu
  - o Method recovery
  - o LIMS compatible
- **Shelf-life:** 1 year

# Agencourt AMPure XP

Agencourt  
AMPure XP



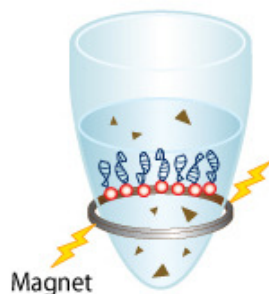
1

Binding



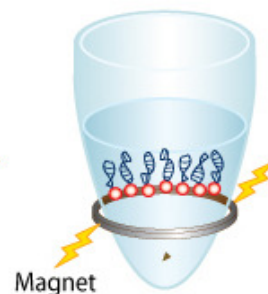
2

Separation



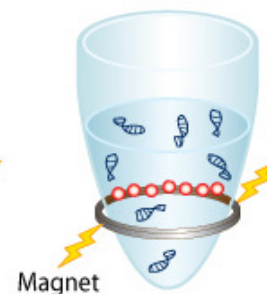
3

Ethanol Wash



4

Elution Buffer



5

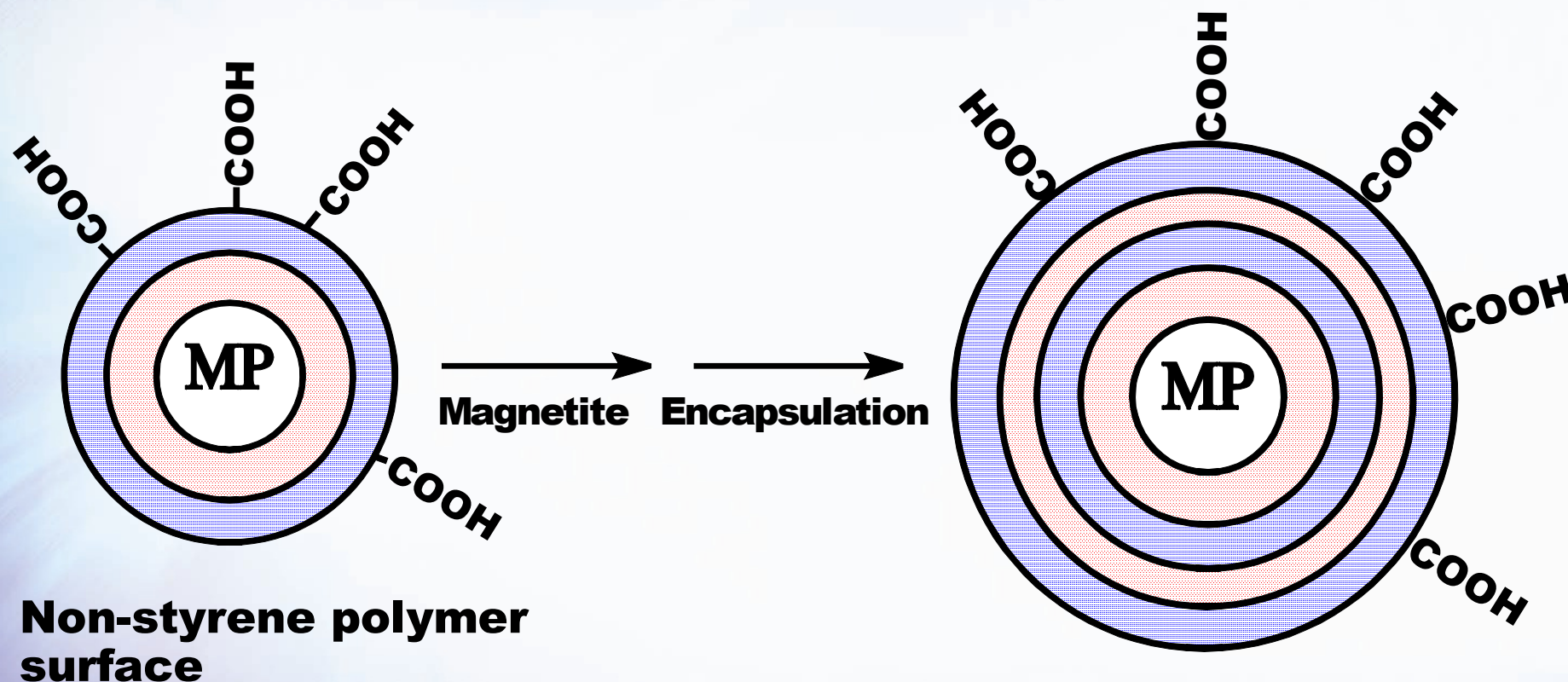
Transfer



6



# Agencourt AMPure vs. AMPure XP: Beads



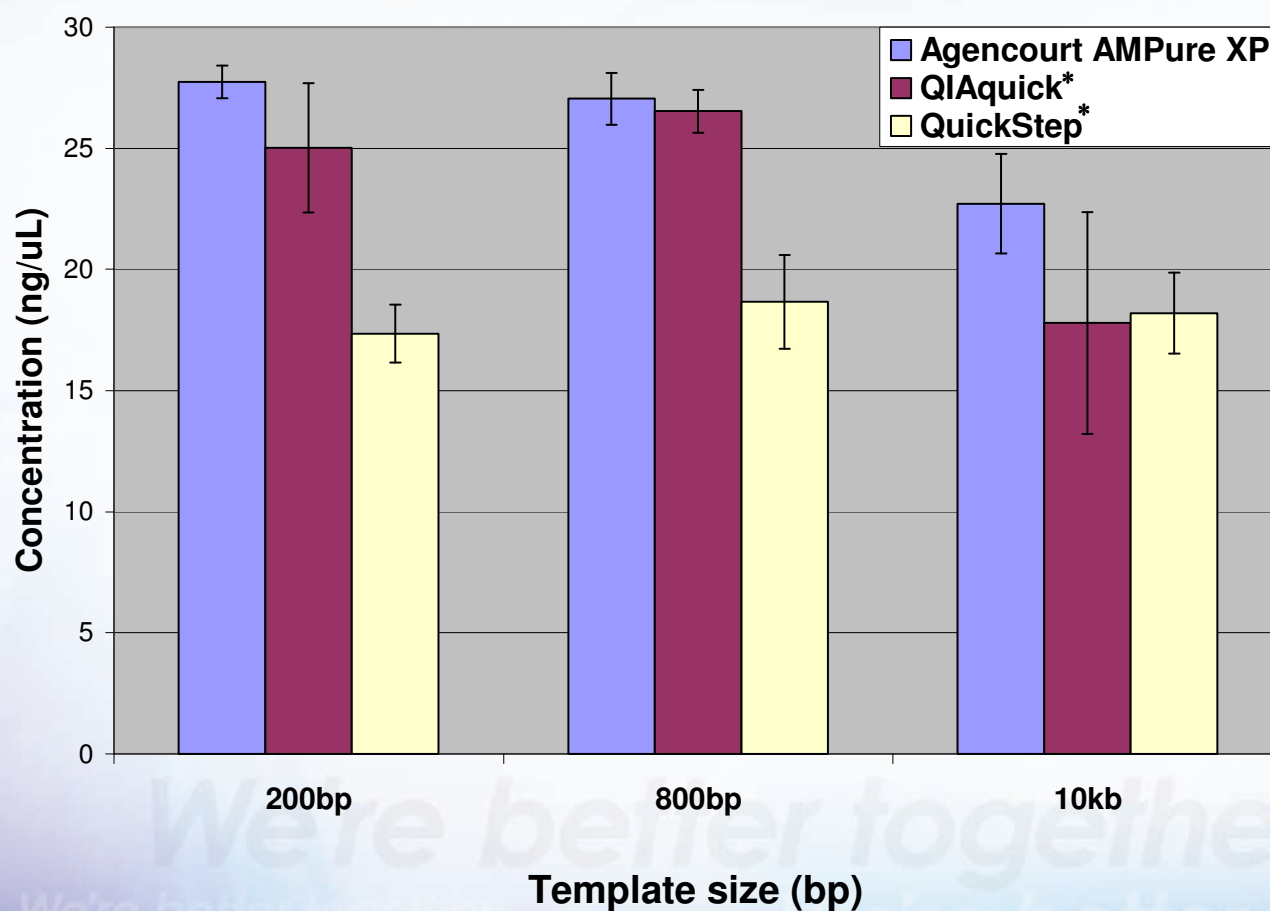
# Fast and Pure PCR Products

	<i>Agencourt AMPure</i>	<i>Agencourt AMPure XP</i>
Bind Inc	5 min	<b>5min</b>
Bind settle	5 min	<b>2 min</b>
EtOH settle	30 sec	<b>30 sec</b>
Air Dry	10 min	<b>0 min</b>
Elute Inc	2 min	<b>2 min</b>
Elute Settle	5 min	<b>1 min</b>
<b><i>Total</i></b>	<b><i>27.5 min</i></b>	<b><i>10.5 min</i></b>

# Agencourt AMPure XP vs. AMPure: Faster & Higher Throughput

Final Transfer	Plates	Agencourt AMPure XP (min)	Agencourt AMPure (min)	XP % Faster
Yes	1	18	30	40%
	2	23	34	32%
	3	30	41	27%
	4	37	47	21%
No	1	14	27	48%
	2	19	32	41%
	3	25	38	34%
	4	31	44	30%
	5	38	49	22%
	6	45	55	18%

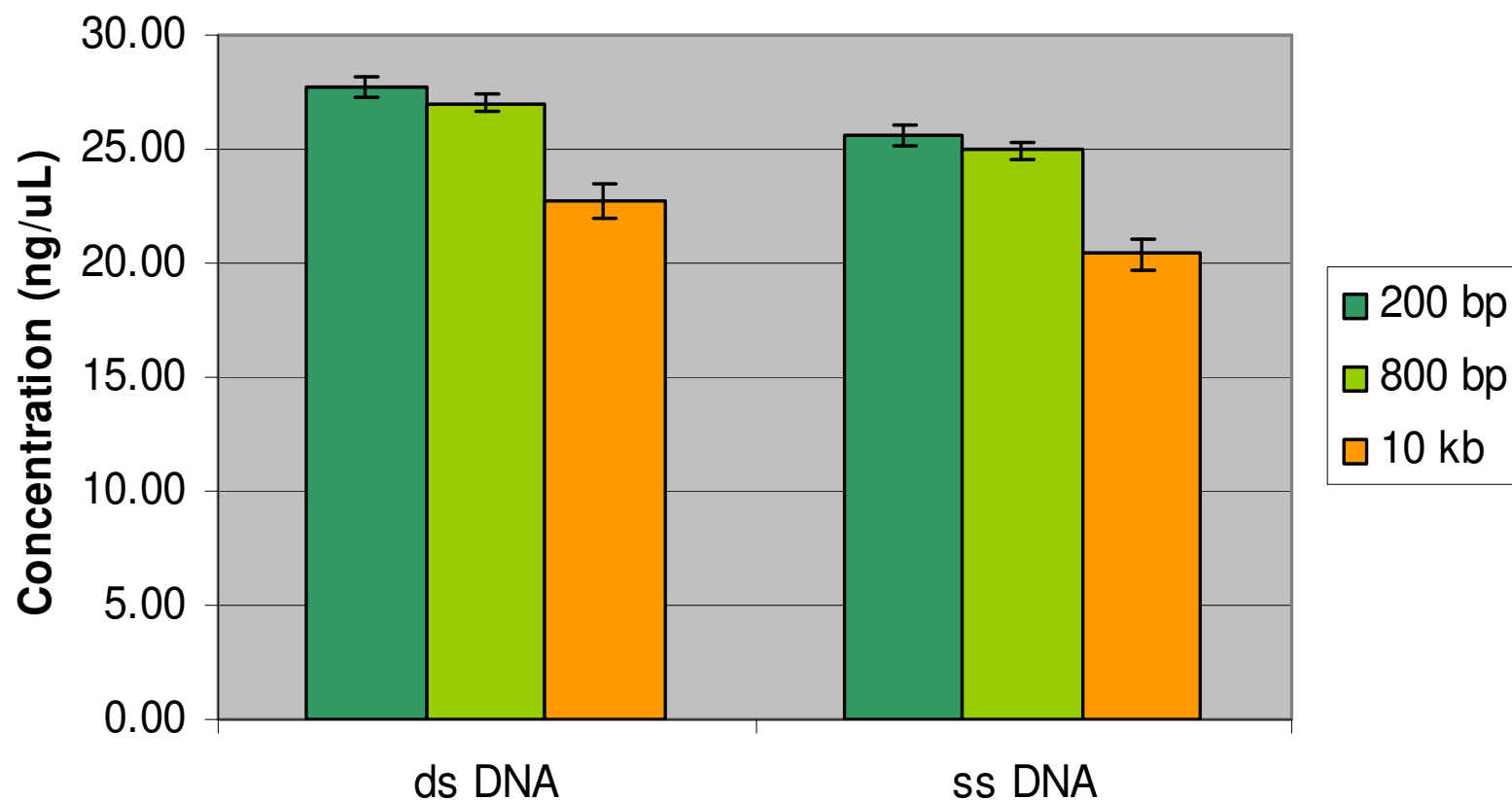
# High Recovery



*\* Trade marks are property of their respective owners*

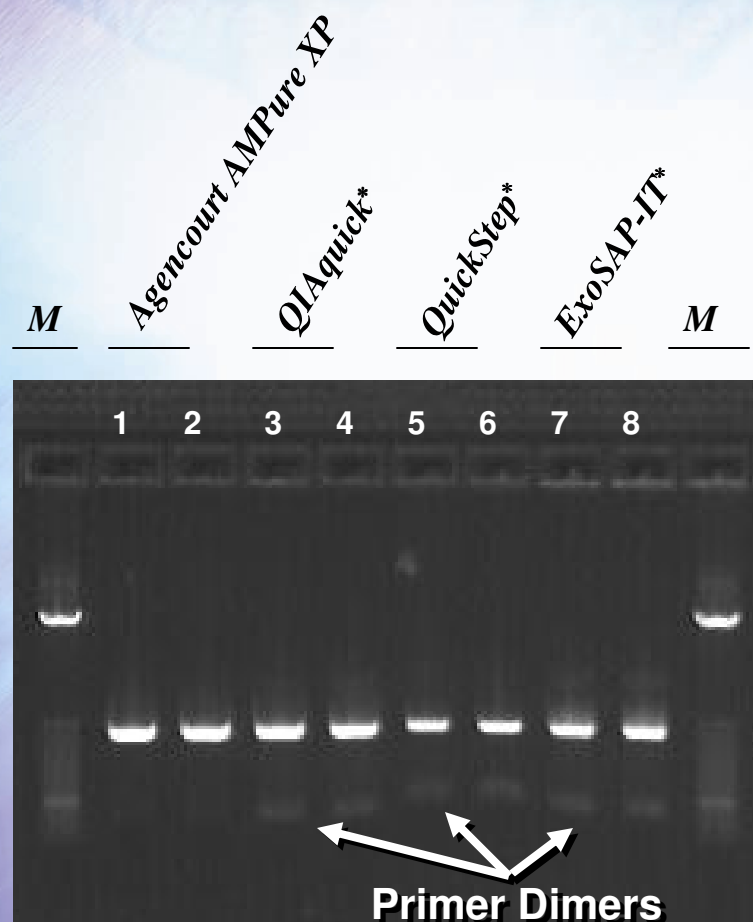


## Purification Versatility : ds & ss DNA

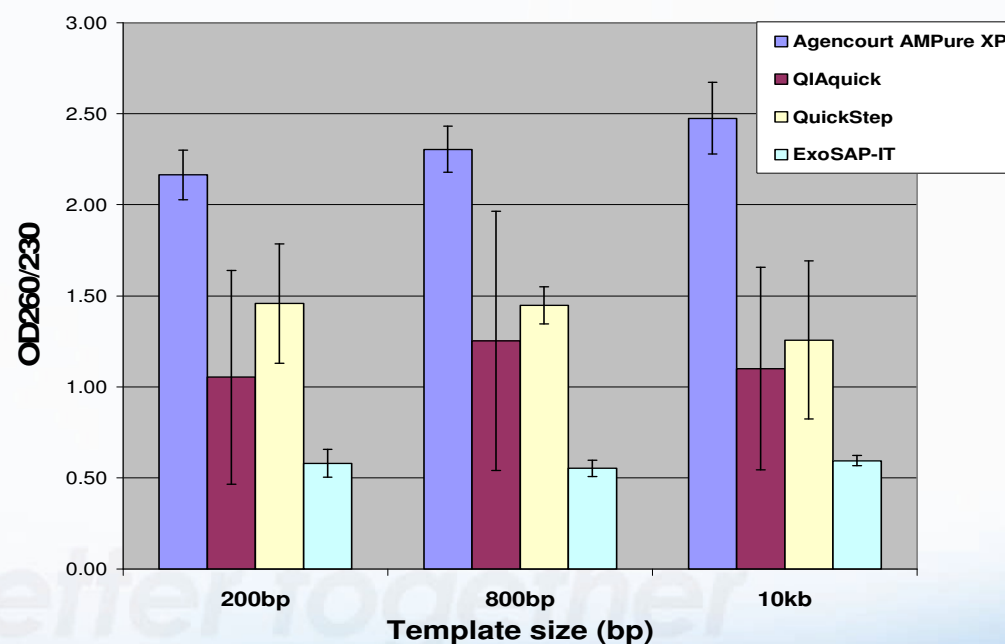


***Agencourt AMPure XP***

# Pure PCR Products: No Dimers --- No Salts



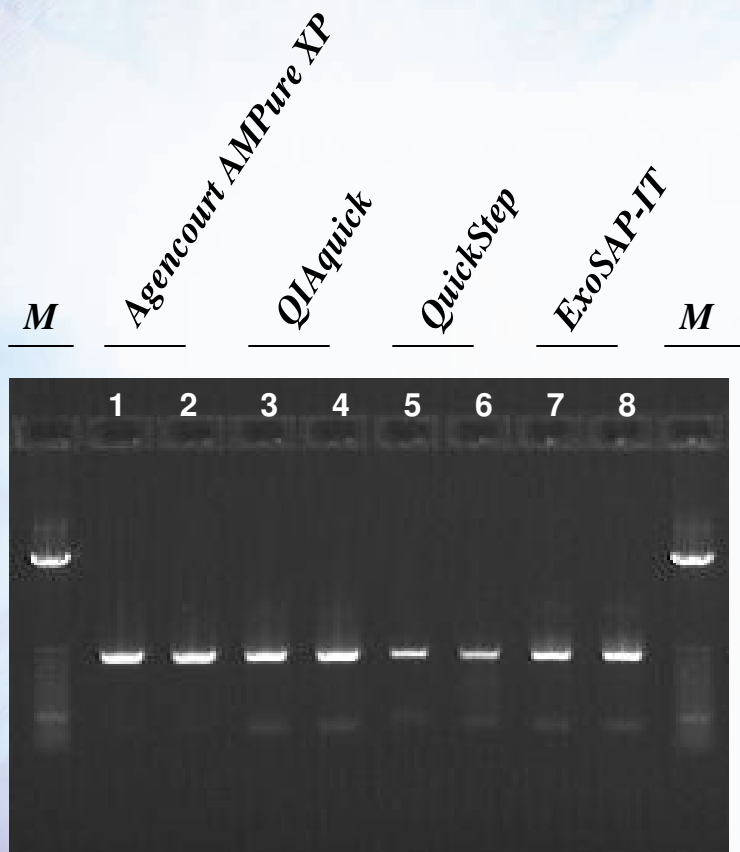
**No Primer Dimers**



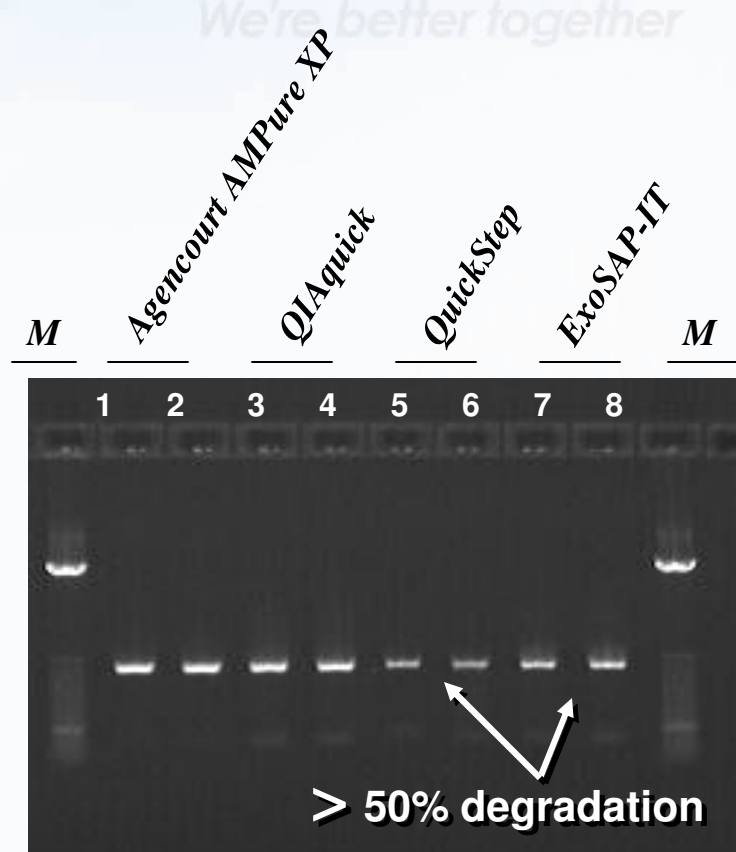
**No Salts Carry Over**

\* Trade marks are property of their respective owners

# Stable PCR Products



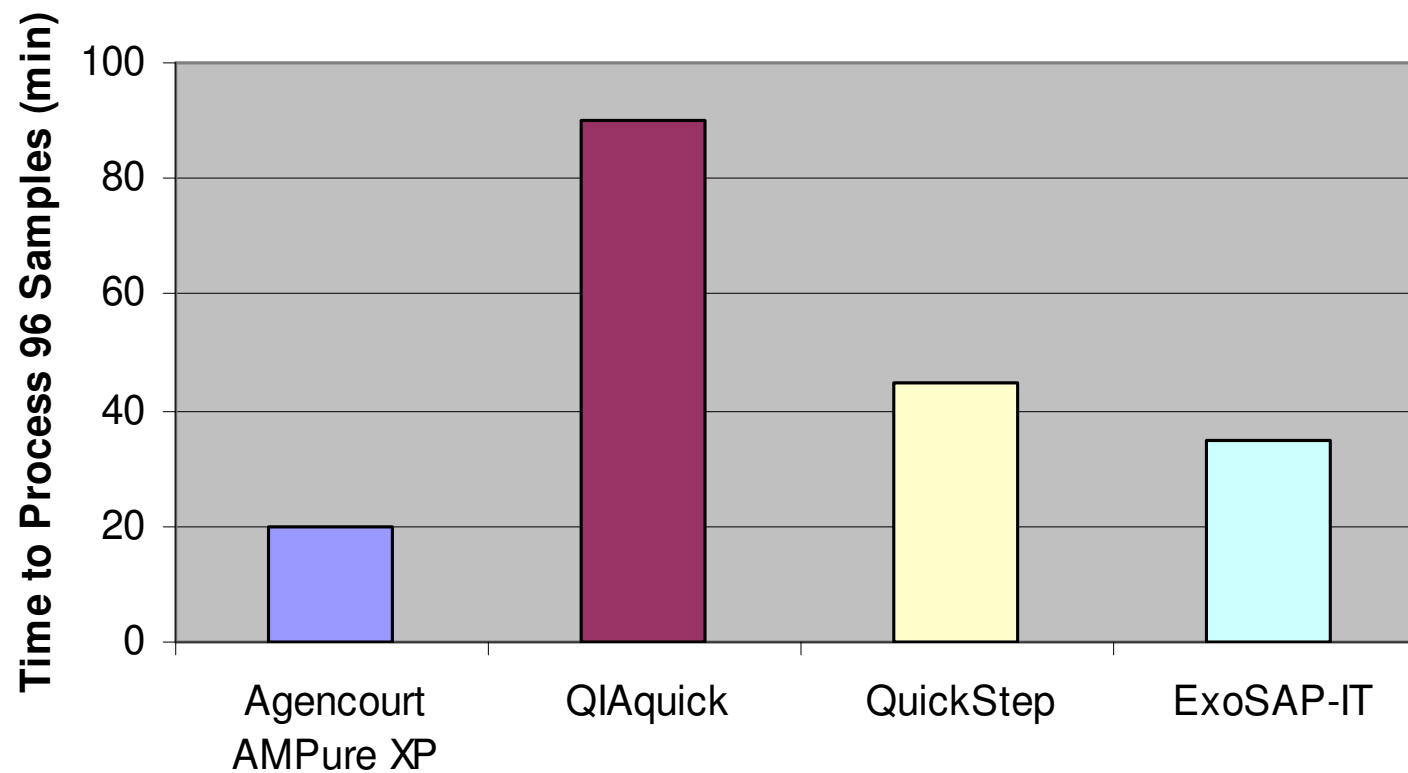
**Day 0**



**Day 7 at 4°C**

PCR Products Post PCR Clean up on 1.2% Agarose

# Faster PCR Clean up





## **Agencourt AMPure XP Offering**

<b>Product</b>	<b>Size*</b>	<b>Product #</b>
Agencourt AMPure XP---5.0mL	139/278	A63880
Agencourt AMPure XP---60.0mL	1666/3333	A63881
Agencourt AMPure XP---450.0mL	12500/25000	A63882

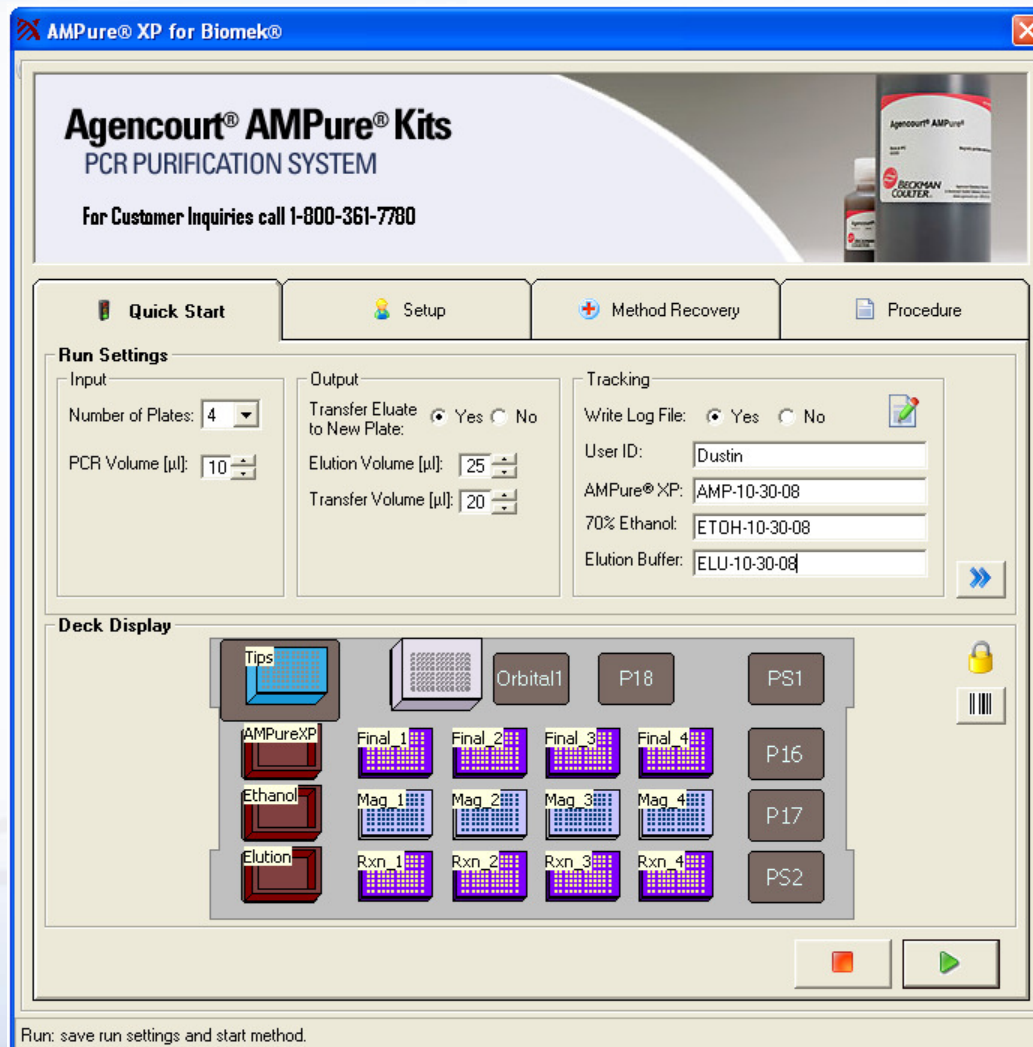
<b>Method</b>	<b>Product #</b>
Software - Agencourt AMPure XP 96 MC - v3.x	A79794
Software - Agencourt AMPure XP 384 MC - v3.x	A79795

\* Note: Ampure price per prep dependent on PCR reaction volume. Pricing assumed for 25(96) & and 10(384) ul PCRs.

# User Friendly Interface

# Agencourt AMPure XP GUI – Quick Start tab

- Purpose:
  - To provide a simple interface for users to quickly specify common runtime variables and confirm deck setup.
- Key Features:
  - ✓ System Inputs
    - Number of plates
    - PCR volume
  - ✓ System Outputs
    - Transfer option
    - Elution volume
    - Transfer volume
  - ✓ Sample Tracking
    - User ID
    - Reagent Lots
  - ✓ Display deck layout
    - Barcode Entry
  - ✓ Automatic restoration of previous run values

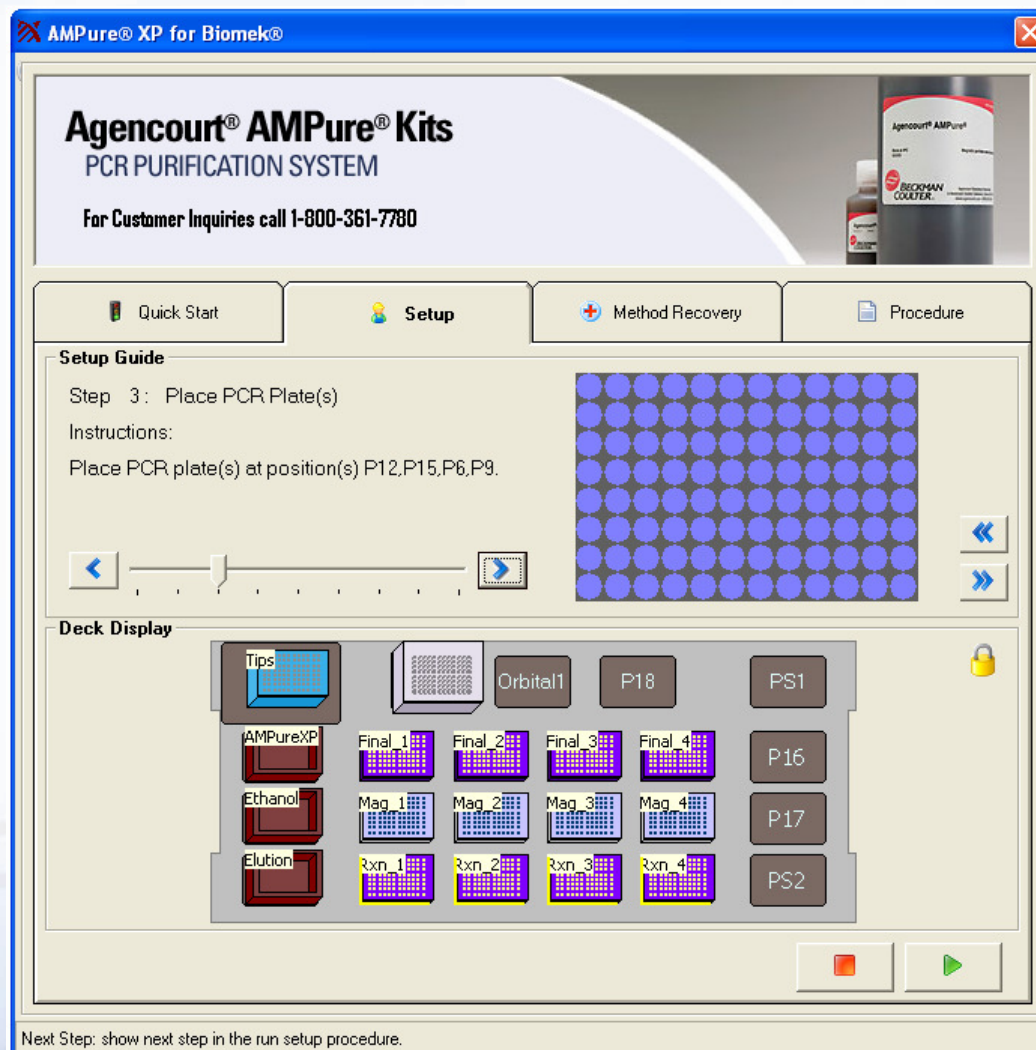


The screenshot shows the 'AMPure® XP for Biomek®' software window. The title bar includes the product name and a close button. The main window has a header section with the product name 'Agencourt® AMPure® Kits', the subtitle 'PCR PURIFICATION SYSTEM', and a customer inquiry number '1-800-361-7780'. Below the header is a navigation bar with four tabs: 'Quick Start' (selected), 'Setup', 'Method Recovery', and 'Procedure'. The 'Quick Start' tab contains three main sections: 'Run Settings', 'Tracking', and 'Deck Display'. The 'Run Settings' section has two sub-sections: 'Input' with 'Number of Plates' (set to 4) and 'PCR Volume [μl]' (set to 10), and 'Output' with 'Transfer Eluate to New Plate' (radio buttons for Yes/No, with Yes selected), 'Elution Volume [μl]' (set to 25), and 'Transfer Volume [μl]' (set to 20). The 'Tracking' section has 'Write Log File' (radio buttons for Yes/No, with Yes selected), 'User ID' (text field with 'Dustin'), 'AMPure® XP' (text field with 'AMP-10-30-08'), '70% Ethanol' (text field with 'ETOH-10-30-08'), and 'Elution Buffer' (text field with 'ELU-10-30-08'). The 'Deck Display' section shows a visual representation of the instrument deck with various components labeled: 'Tips', 'Orbital1', 'P18', 'PS1', 'AMPureXP', 'Final\_1' through 'Final\_4', 'Ethanol', 'Mag\_1' through 'Mag\_4', 'P16', 'P17', 'Elution', 'Rxn\_1' through 'Rxn\_4', and 'PS2'. At the bottom of the window, there is a status bar that reads 'Run: save run settings and start method.' and two buttons, a red stop button and a green play button.



# Agencourt AMPure XP GUI – Run Setup tab

- Purpose:  
To guide novice users through the run setup process.
- Key Features:
  - ✓ Detailed instructions to guide users step by step through the setup process at their own pace.
  - ✓ Positions specified in the instructions are highlighted in the deck display.
  - ✓ Minimum fill volumes for each reagent reservoir are calculated and displayed (i.e. it takes more reagent to process 4 plates than 1).
  - ✓ Completely optional; expert users do not have to go through setup guide to start a run... Just Quick Start > Run.





# Agencourt AMPure XP – Method Recovery tab

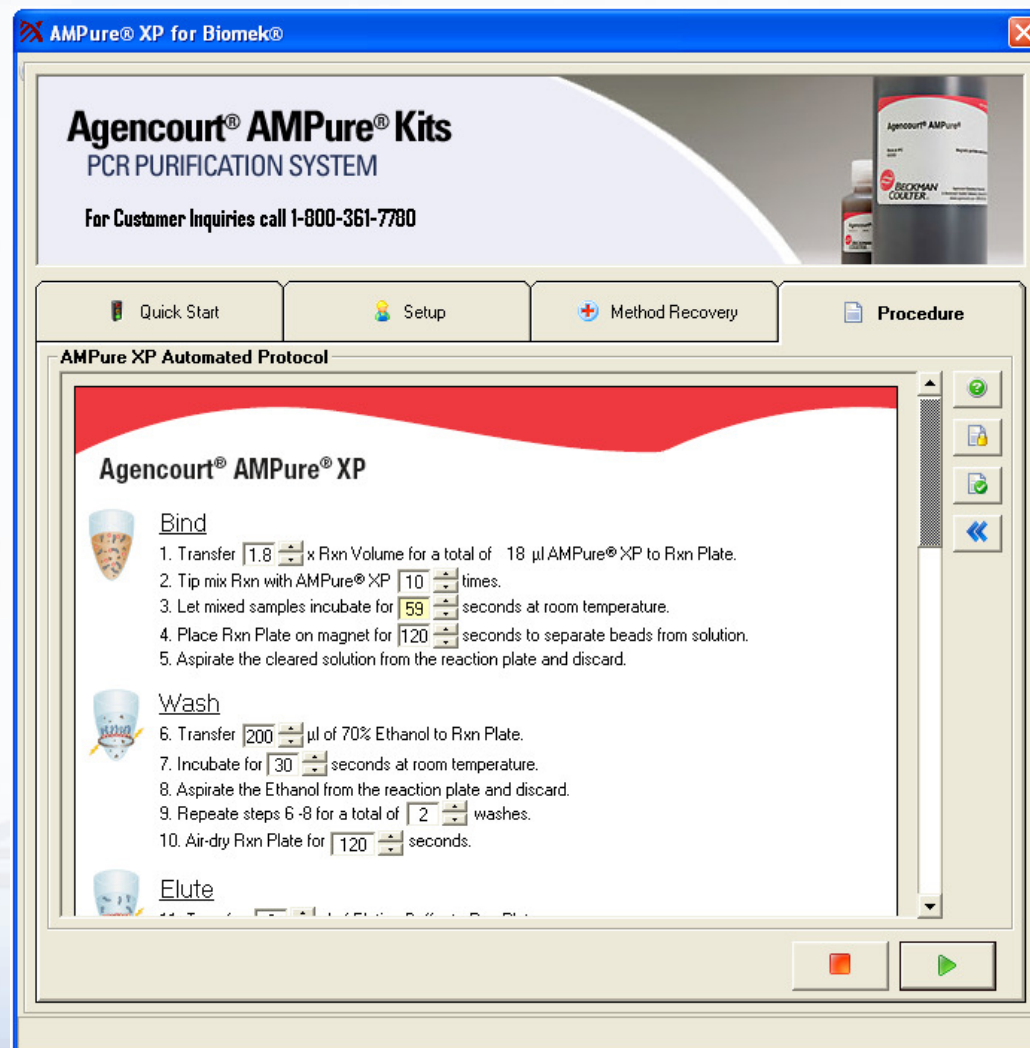
- Purpose:
  - ✓ To enable users to recover an aborted run.
- Key Features:
  - ✓ The state of each plate (which steps have been performed, which have not) and the location of each plate is maintained throughout the run.
  - ✓ If a method recovery file is found when the method starts up, the GUI will present the Method Recovery tab.
  - ✓ The list view shows the current state of the highlighted plate.
  - ✓ Users can click on any plate in the deck display to highlight it and see its state.
  - ✓ Users can manipulate the state of each plate by checking/unchecking the box to the left of each step.
  - ✓ Users can rearrange the location of plates in the deck display.
  - ✓ Users can reset a plate, all plates, the deck or start over completely with the click of a button.
  - ✓ Detailed instructions for this step are provided with the click of a button.



# Agencourt AMPure XP – Customize Procedure tab

- Purpose

To make it easy for users to adjust run settings. It enables users that are not comfortable editing or creating Biomek methods to easily customize an Agencourt method to suit their specific needs.
- Key Features
  - ✓ Every sensible protocol variable is exposed in a descriptive and readable format.
  - ✓ Non-validated run settings are highlighted to caution against changes.
  - ✓ Validated run settings can be restored with the click of a button.
  - ✓ Custom run settings are saved and restored.
  - ✓ Allows multiple users to run their own customized version of the method.
  - ✓ Settings can be locked.
  - ✓ Detailed instructions for this step are provided with the click of a button.



# Automation Configuration

NX<sup>P</sup> 96

Beckman Part #	Qty	Description
A31841	1	Biomek NXp Single Arm Multichannel Laboratory System
A16170	1	Biomek Automation Controller XP and Monitor with Biomek™ System Software
719368	1	Biomek FX/NX 96-Channel 200 µL disposable tip pipetting head
719356	1	Biomek Disposable Tip Loader ALP The Biomek Disposable Tip Loader ALP for 96/P200 and 384/P30 disposable tips. Requires: 40 PSI clean dry air, 2.5 cfm.
719948	1	High-Density Twelve-Position 4x3 ALP For use on a FX/NX
719357	1	Standard Single-Position ALP for positioning of one standard 96 and/or 384 well microtiter plate.
719363	1	Biomek Disposable 96 ALP Tip Wash Station. NOTE: Requires Biomek Device Controller (P/N 719366)
719366	1	Biomek Device Controller Includes Biomek device controller module, CAN communications cable.
A29216	1	Agencourt AMPure 96 Batch method
A42033	1	Installation & validation, North America, 1-day
<b>A32782</b>	<b>3</b>	<b>Agencourt SPRIPlate 96R Super Magnet Plate</b>

