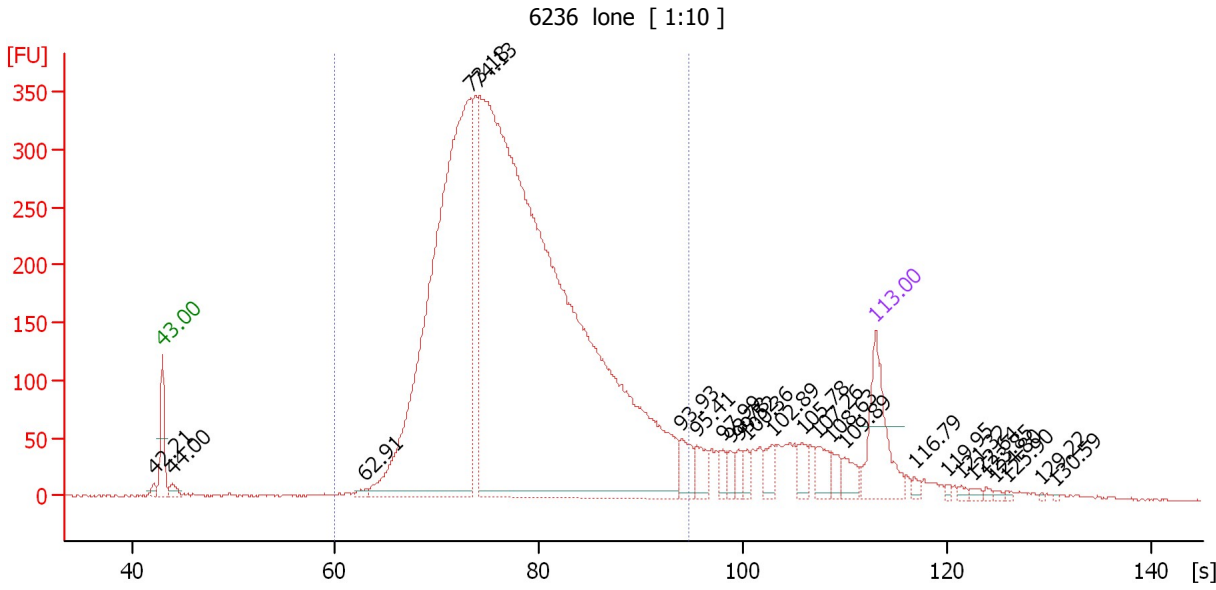


Assay Class: High Sensitivity DNA Assay
 Data Path: C:\...gh Sensitivity DNA Assay_DE72905255_2011-09-29_14-31-47.xad

Created: 9/29/2011 2:31:47 PM
 Modified: 9/29/2011 3:13:07 PM

Electropherogram Summary Continued ...



Overall Results for sample 6 : 6236 lone

Number of peaks found: 25 Corr. Area 1: 6,813.4
 Noise: 1.2

Peak table for sample 6 : 6236 lone

Peak	Conc. [pg/μl]	Molarity [pmol/l]	Observations	Size [bp]	Aligned Migration Time [s]
1	0.00	0.0		32	42.21
3	13.99	511.3		41	44.00
4	5.74	37.2		233	62.91
5	1,018.59	4,368.9		353	73.18
6	2,123.78	8,816.0		365	74.13
7	27.19	43.5		948	93.93
8	22.58	30.6		1,119	95.41
9	10.73	10.7		1,515	97.99
10	9.62	8.9		1,636	98.78
11	10.34	9.0		1,749	99.52
12	10.08	8.1		1,878	100.36
13	17.22	10.3		2,529	102.89
14	17.89	6.7		4,069	105.78
15	19.83	5.7		5,235	107.26
16	13.07	3.1		6,318	108.63
17	16.63	3.4		7,387	109.89
19	0.00	0.0		14,033	116.79
20	0.00	0.0		17,077	119.95
21	0.00	0.0		18,396	121.32
22	0.00	0.0		19,664	122.64
23	0.00	0.0		20,831	123.85
24	0.00	0.0		21,744	124.80
25	0.00	0.0		22,810	125.90
26	0.00	0.0		26,006	129.22
27	0.00	0.0		27,325	130.59

Assay Class: High Sensitivity DNA Assay
Data Path: C:\...gh Sensitivity DNA Assay_DE72905255_2011-09-29_14-31-47.xad

Created: 9/29/2011 2:31:47 PM
Modified: 9/29/2011 3:13:07 PM

Electropherogram Summary Continued ...

... Region table for sample 6 :

6236 lone

From [s]	To [s]	Corr. Area	% of Total	Average Size [bp]	Size distribution in CV [%]	Conc. [pg/μl]	Molarity [pmol/l]	Color
59.91	94.63	6,813.4	88	433	29.8	3,082.81	11,870.5	■