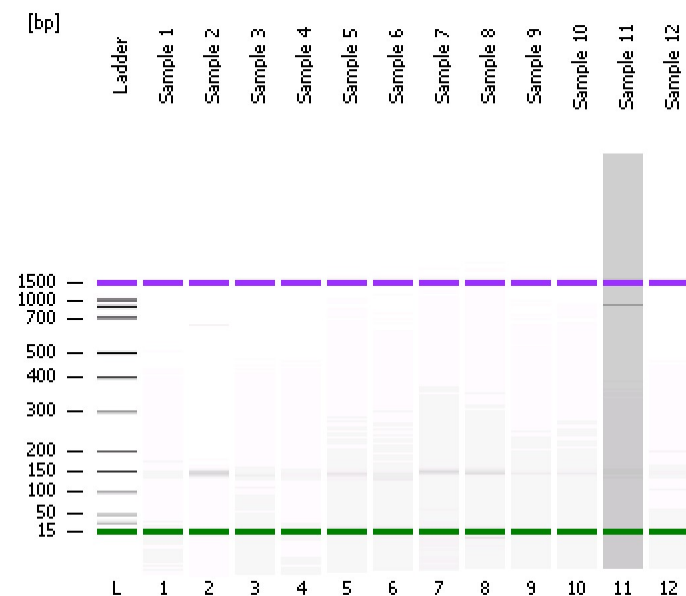


Assay Class: DNA 1000
Data Path: C:\...-25\2100 expert_DNA 1000_DE11400907_2011-08-25_11-28-11.xad

Created: 25/08/2011 11:28:11
Modified: 25/08/2011 14:10:40

Electrophoresis File Run SummaryInstrument Information:

Instrument Name: DE11400907

Firmware: C.01.069

Serial#: DE11400907

Type: G2938A

Assay Information:

Assay Origin Path: C:\Program Files\Agilent\2100 bioanalyzer\2100 expert\assays\dsDNA\DNA 1000 Series II.xsy

Title: DNA 1000 Series II

Version: 2.1

Assay Comments: © Copyright 2003-2007 Agilent Technologies

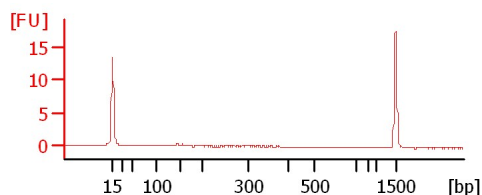
Chip Information:

Chip Lot:

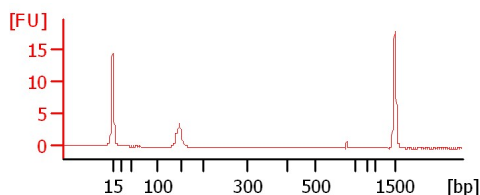
Reagent Kit Lot:

Chip Comments:

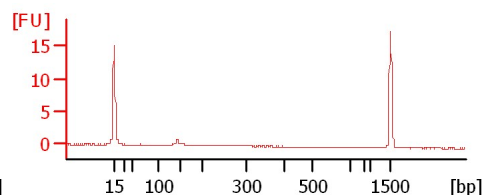
Sample 1



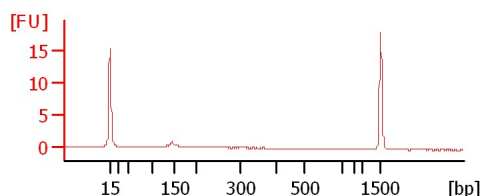
Sample 2



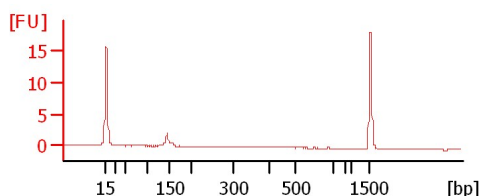
Sample 3



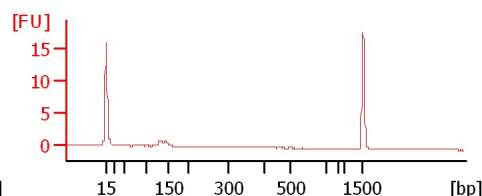
Sample 4



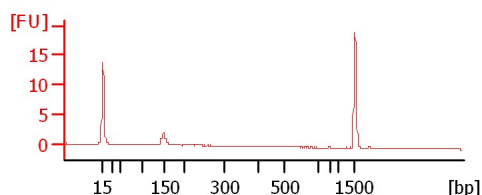
Sample 5



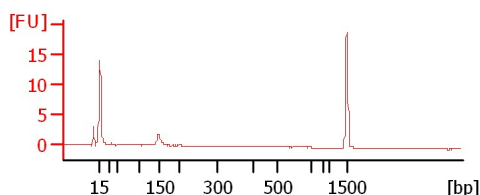
Sample 6



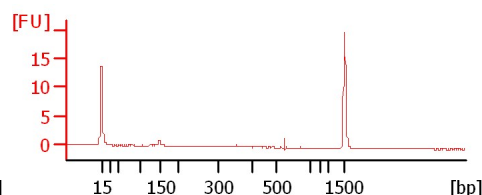
Sample 7



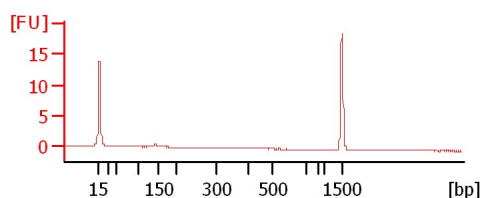
Sample 8



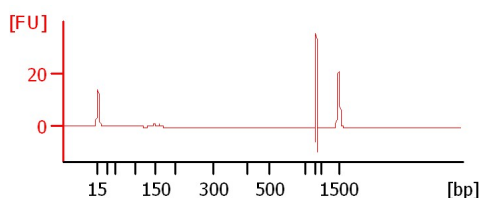
Sample 9



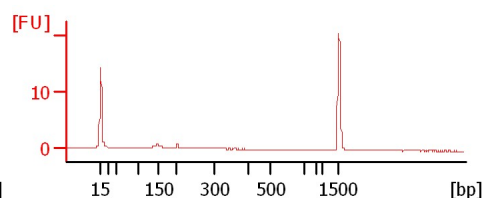
Sample 10



Sample 11



Sample 12



Assay Class: DNA 1000
Data Path: C:\...-25\2100 expert_DNA 1000_DE11400907_2011-08-25_11-28-11.xad

Created: 25/08/2011 11:28:11
Modified: 25/08/2011 14:10:40

Electrophoresis File Run Summary (Chip Summary)

Sample Name	Sample Comment	Rest. Digest	Status	Observation	Result Label	Result Color
Sample 1		<input type="checkbox"/>	✓			
Sample 2		<input type="checkbox"/>	✓			
Sample 3		<input type="checkbox"/>	✓			
Sample 4		<input type="checkbox"/>	✓			
Sample 5		<input type="checkbox"/>	✓			
Sample 6		<input type="checkbox"/>	✓			
Sample 7		<input type="checkbox"/>	✓			
Sample 8		<input type="checkbox"/>	✓			
Sample 9		<input type="checkbox"/>	✓			
Sample 10		<input type="checkbox"/>	✓			
Sample 11		<input type="checkbox"/>	✓			
Sample 12		<input type="checkbox"/>	✓			
Chip Lot #				Reagent Kit Lot #		

Chip Comments :

Assay Class: DNA 1000
Data Path: C:\...-25\2100 expert_DNA 1000_DE11400907_2011-08-25_11-28-11.xad

Created: 25/08/2011 11:28:11
Modified: 25/08/2011 14:10:40

Electrophoresis Assay Details

General Analysis Settings

Number of Available Sample and Ladder Wells (Max.) : 13
Minimum Visible Range [s] : 30
Maximum Visible Range [s] : 129
Start Analysis Time Range [s] : 30
End Analysis Time Range [s] : 128.95
Ladder Concentration [ng/μl] : 44
Uses Standard Area for Ladder Fragments
Lower Marker Concentration [ng/μl] : 4.2
Upper Marker Concentration [ng/μl] : 2.1
Used Upper Marker for Quantitation
Standard Curve Fit is Point to Point
Show Data Aligned to Lower and Upper Marker

Integrator Settings

Integration Start Time [s] : 30
Integration End Time [s] : 128.95
Slope Threshold : 0.5
Height Threshold [FU] : 20
Area Threshold : 0.1
Width Threshold [s] : 0.5
Baseline Plateau [s] : 0.5

Filter Settings

Filter Width [s] : 0.5
Polynomial Order : 4

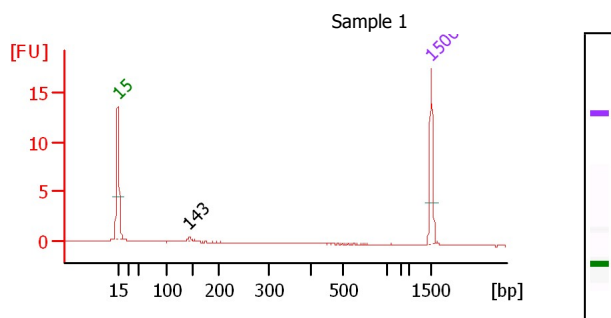
Ladder

Ladder Peak	Size	Area
1	15	25
2	25	26
3	50	34
4	100	41
5	150	45
6	200	52
7	300	63
8	400	76
9	500	83
10	700	88
11	850	86
12	1000	90
13	1500	52

Assay Class: DNA 1000
Data Path: C:\...-25\2100 expert_DNA 1000_DE11400907_2011-08-25_11-28-11.xad

Created: 25/08/2011 11:28:11
Modified: 25/08/2011 14:10:40

Electropherogram Summary

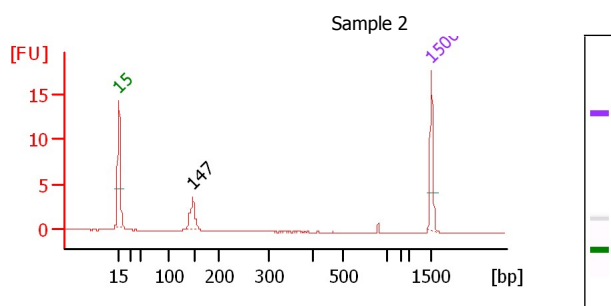


Overall Results for sample 1 : Sample 1

Number of peaks found: 1

Peak table for sample 1 : Sample 1

Peak	Size [bp]	Conc. [ng/μl]	Molarity [nmol/l]	Observations
1	15	4.20	424.2	Lower Marker
2	143	0.10	1.0	
3	1,500	2.10	2.1	Upper Marker



Overall Results for sample 2 : Sample 2

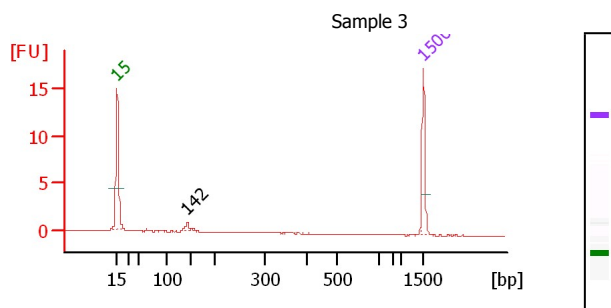
Number of peaks found: 1

Peak table for sample 2 : Sample 2

Peak	Size [bp]	Conc. [ng/μl]	Molarity [nmol/l]	Observations
1	15	4.20	424.2	Lower Marker
2	147	1.46	15.0	
3	1,500	2.10	2.1	Upper Marker

Assay Class: DNA 1000
Data Path: C:\...-25\2100 expert_DNA 1000_DE11400907_2011-08-25_11-28-11.xad

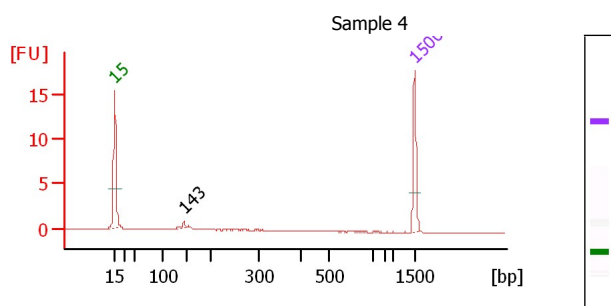
Created: 25/08/2011 11:28:11
Modified: 25/08/2011 14:10:40

Electropherogram Summary Continued ...**Overall Results for sample 3 : Sample 3**

Number of peaks found: 1

Peak table for sample 3 : Sample 3

Peak	Size [bp]	Conc. [ng/μl]	Molarity [nmol/l]	Observations
1	15	4.20	424.2	Lower Marker
2	142	0.32	3.4	
3	1,500	2.10	2.1	Upper Marker

**Overall Results for sample 4 : Sample 4**

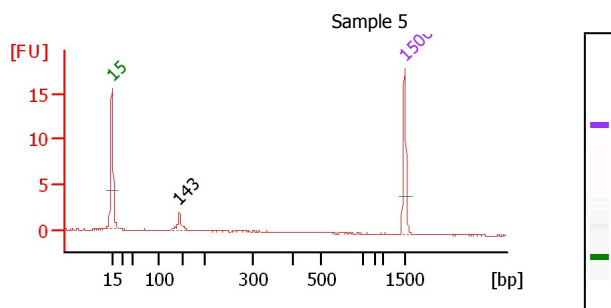
Number of peaks found: 1

Peak table for sample 4 : Sample 4

Peak	Size [bp]	Conc. [ng/μl]	Molarity [nmol/l]	Observations
1	15	4.20	424.2	Lower Marker
2	143	0.19	2.1	
3	1,500	2.10	2.1	Upper Marker

Assay Class: DNA 1000
Data Path: C:\...-25\2100 expert_DNA 1000_DE11400907_2011-08-25_11-28-11.xad

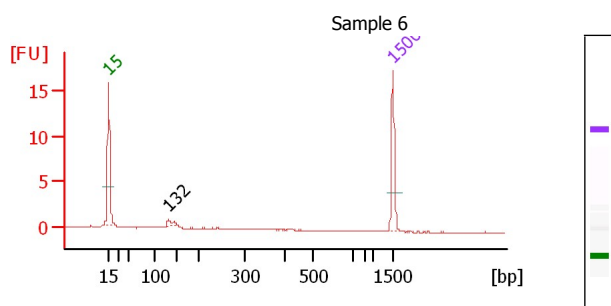
Created: 25/08/2011 11:28:11
Modified: 25/08/2011 14:10:40

Electropherogram Summary Continued ...**Overall Results for sample 5 : Sample 5**

Number of peaks found: 1

Peak table for sample 5 : Sample 5

Peak	Size [bp]	Conc. [ng/ μ l]	Molarity [nmol/l]	Observations
1	15	4.20	424.2	Lower Marker
2	143	0.63	6.6	
3	1,500	2.10	2.1	Upper Marker

**Overall Results for sample 6 : Sample 6**

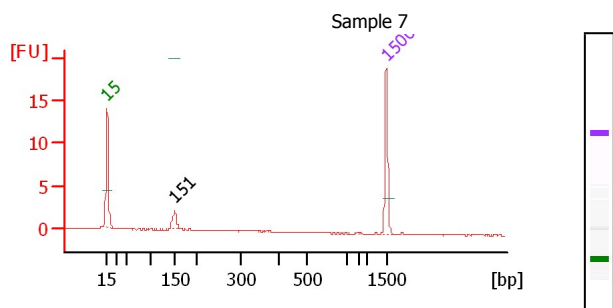
Number of peaks found: 1

Peak table for sample 6 : Sample 6

Peak	Size [bp]	Conc. [ng/ μ l]	Molarity [nmol/l]	Observations
1	15	4.20	424.2	Lower Marker
2	132	0.46	5.2	
3	1,500	2.10	2.1	Upper Marker

Assay Class: DNA 1000
Data Path: C:\...-25\2100 expert_DNA 1000_DE11400907_2011-08-25_11-28-11.xad

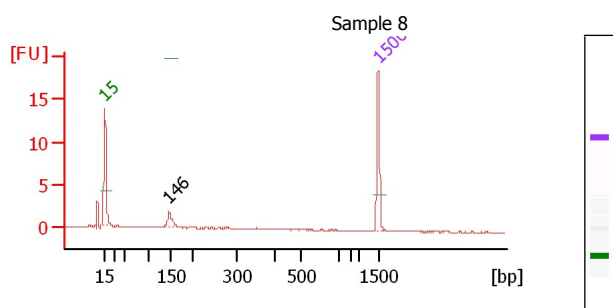
Created: 25/08/2011 11:28:11
Modified: 25/08/2011 14:10:40

Electropherogram Summary Continued ...**Overall Results for sample 7 : Sample 7**

Number of peaks found: 1

Peak table for sample 7 : Sample 7

Peak	Size [bp]	Conc. [ng/μl]	Molarity [nmol/l]	Observations
1	15	4.20	424.2	Lower Marker
2	151	0.69	6.9	
3	1,500	2.10	2.1	Upper Marker

**Overall Results for sample 8 : Sample 8**

Number of peaks found: 1

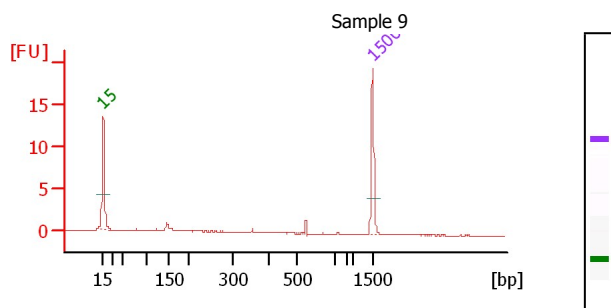
Peak table for sample 8 : Sample 8

Peak	Size [bp]	Conc. [ng/μl]	Molarity [nmol/l]	Observations
1	15	4.20	424.2	Lower Marker
2	146	0.65	6.8	
3	1,500	2.10	2.1	Upper Marker

Assay Class: DNA 1000
 Data Path: C:\...-25\2100 expert_DNA 1000_DE11400907_2011-08-25_11-28-11.xad

Created: 25/08/2011 11:28:11
 Modified: 25/08/2011 14:10:40

Electropherogram Summary Continued ...

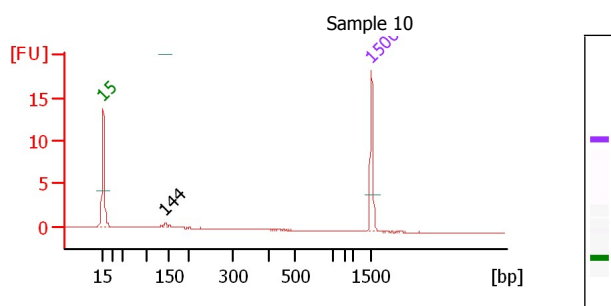


Overall Results for sample 9 : Sample 9

Number of peaks found: 0

Peak table for sample 9 : Sample 9

Peak	Size [bp]	Conc. [ng/μl]	Molarity [nmol/l]	Observations
1	15	4.20	424.2	Lower Marker
2	1,500	2.10	2.1	Upper Marker



Overall Results for sample 10 : Sample 10

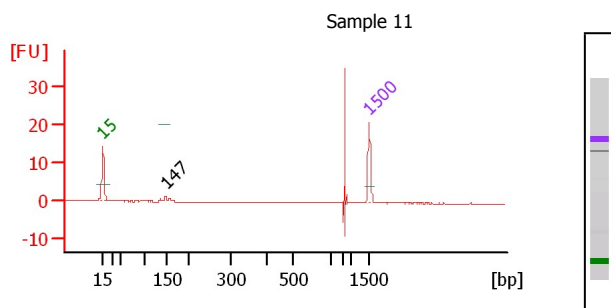
Number of peaks found: 1

Peak table for sample 10 : Sample 10

Peak	Size [bp]	Conc. [ng/μl]	Molarity [nmol/l]	Observations
1	15	4.20	424.2	Lower Marker
2	144	0.20	2.1	
3	1,500	2.10	2.1	Upper Marker

Assay Class: DNA 1000
Data Path: C:\...-25\2100 expert_DNA 1000_DE11400907_2011-08-25_11-28-11.xad

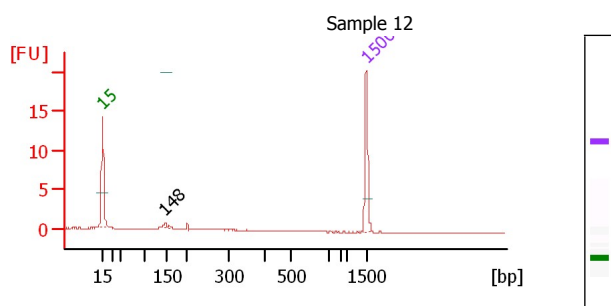
Created: 25/08/2011 11:28:11
Modified: 25/08/2011 14:10:40

Electropherogram Summary Continued ...**Overall Results for sample 11 : Sample 11**

Number of peaks found: 1

Peak table for sample 11 : Sample 11

Peak	Size [bp]	Conc. [ng/μl]	Molarity [nmol/l]	Observations
1	15	4.20	424.2	Lower Marker
2	147	0.32	3.3	
3	1,500	2.10	2.1	Upper Marker

**Overall Results for sample 12 : Sample 12**

Number of peaks found: 1

Peak table for sample 12 : Sample 12

Peak	Size [bp]	Conc. [ng/μl]	Molarity [nmol/l]	Observations
1	15	4.20	424.2	Lower Marker
2	148	0.20	2.1	
3	1,500	2.10	2.1	Upper Marker

Assay Class: DNA 1000
Data Path: C:\...-25\2100 expert_DNA 1000_DE11400907_2011-08-25_11-28-11.xad

Created: 25/08/2011 11:28:11
Modified: 25/08/2011 14:10:40

Gel Image